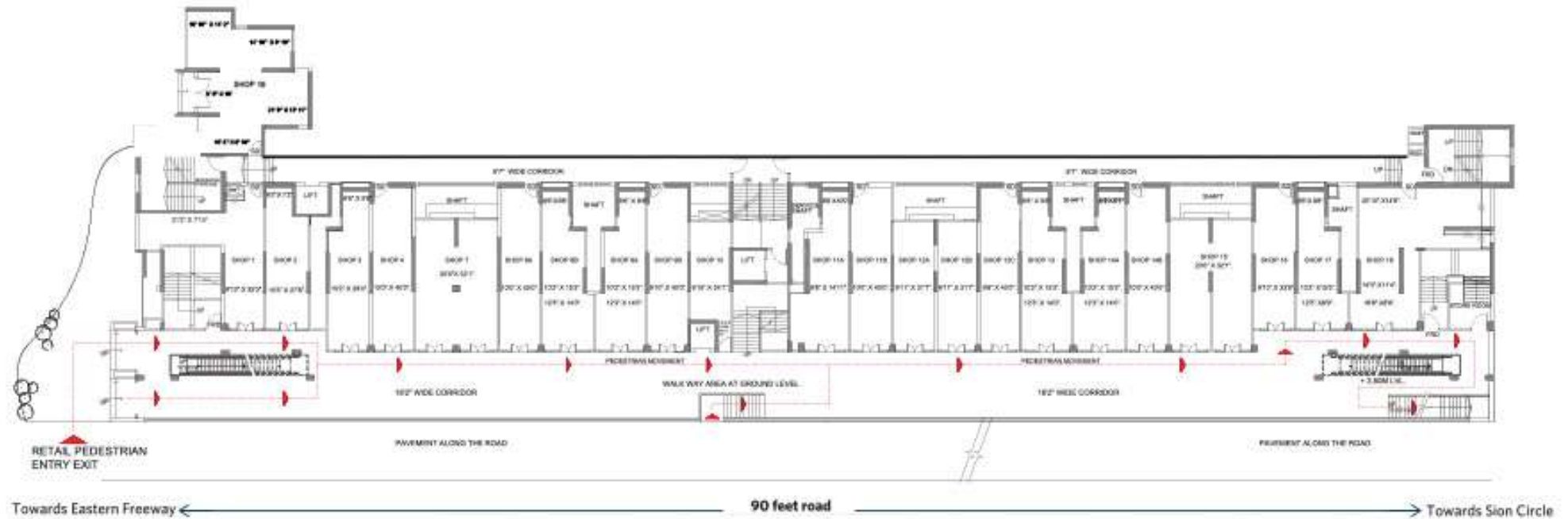


# LOWER GROUND FLOOR PLAN



Shop No.	Carpet Area In sq. ft.
1	500
2	327
3	360
4	390
7	626
8A	391
8B	391
9A	391
9B	389
10	263
11A	421
11B	390

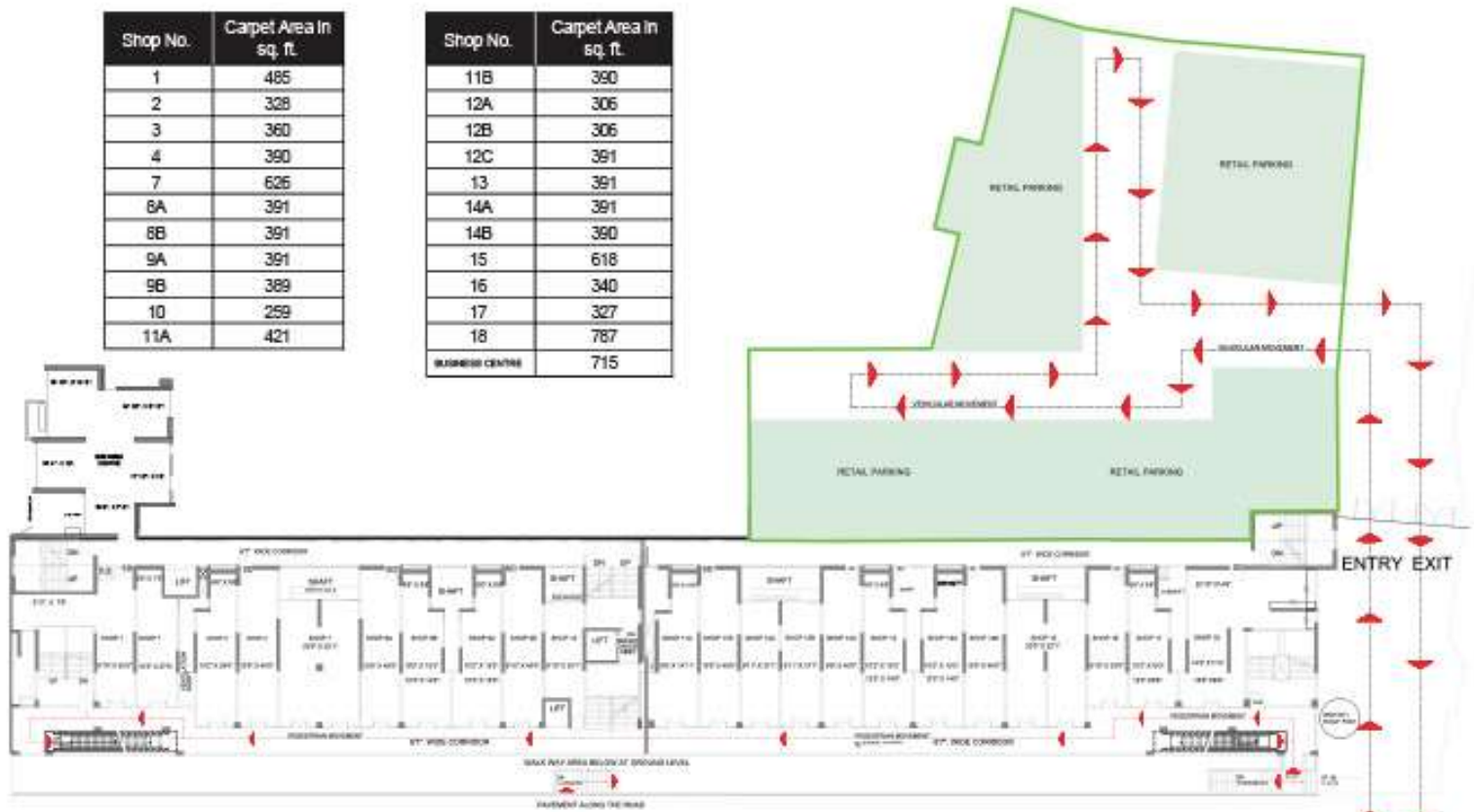
Shop No.	Carpet Area In sq. ft.
12A	306
12B	306
12C	391
13	390
14A	391
14B	390
15	618
16	340
17	327
18	787
19	850



# UPPER GROUND FLOOR PLAN

Shop No.	Carpet Area In sq. ft.
1	485
2	328
3	360
4	390
7	626
8A	391
8B	391
9A	391
9B	389
10	259
11A	421

Shop No.	Carpet Area In sq. ft.
11B	390
12A	306
12B	306
12C	391
13	391
14A	391
14B	390
15	618
16	340
17	327
18	787
BUSINESS CENTRE	715



Towards Eastern Freeway ←

90 feet road

→ Towards Sion Circle



# FIRST FLOOR PLAN



Shop No.	Carpet Area In sq. ft.
1	461
2	327
3	308
4	392
5	306
6	305
7	389
8	394
9	391
10	388
11	258
12	417

Shop No.	Carpet Area In sq. ft.
13	389
14	305
15	305
16	368
17	389
18	390
19	389
20	305
21	305
22	337
23	327
24	787

